



San Diego Region Stormwater Capture & Use Feasibility Study (SWCFS)

Next Steps:
Specific Actions for 2019 IRWM Plan Update
Final Report and Schedule Update
August 1, 2018

Presented by County of San Diego & ESA

Compilation of Technical Memoranda

Draft

SAN DIEGO STORMWATER CAPTURE AND USE FEASIBILITY STUDY Modeling Approach and Results Technical Memorandum

Prepared for
County of San Diego

February 2018

Prepared by
ESA
Brown & Calhoun
Burns & McDonnell



- Data Collection
- Technical Feasibility
- Cost
- Implementation (Prioritization)
- Final Report

Eight Stormwater Use Alternatives

A Discharge to groundwater aquifers - for potable use

B Discharge to groundwater to reestablish natural hydrology / restore biological uses

C Irrigation to be used on-site

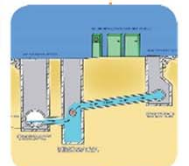
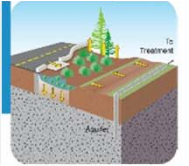
D Small scale on-site use for irrigation / private parcels

E Flow-through natural treatment system (wetland treatment) and/or restoration sites

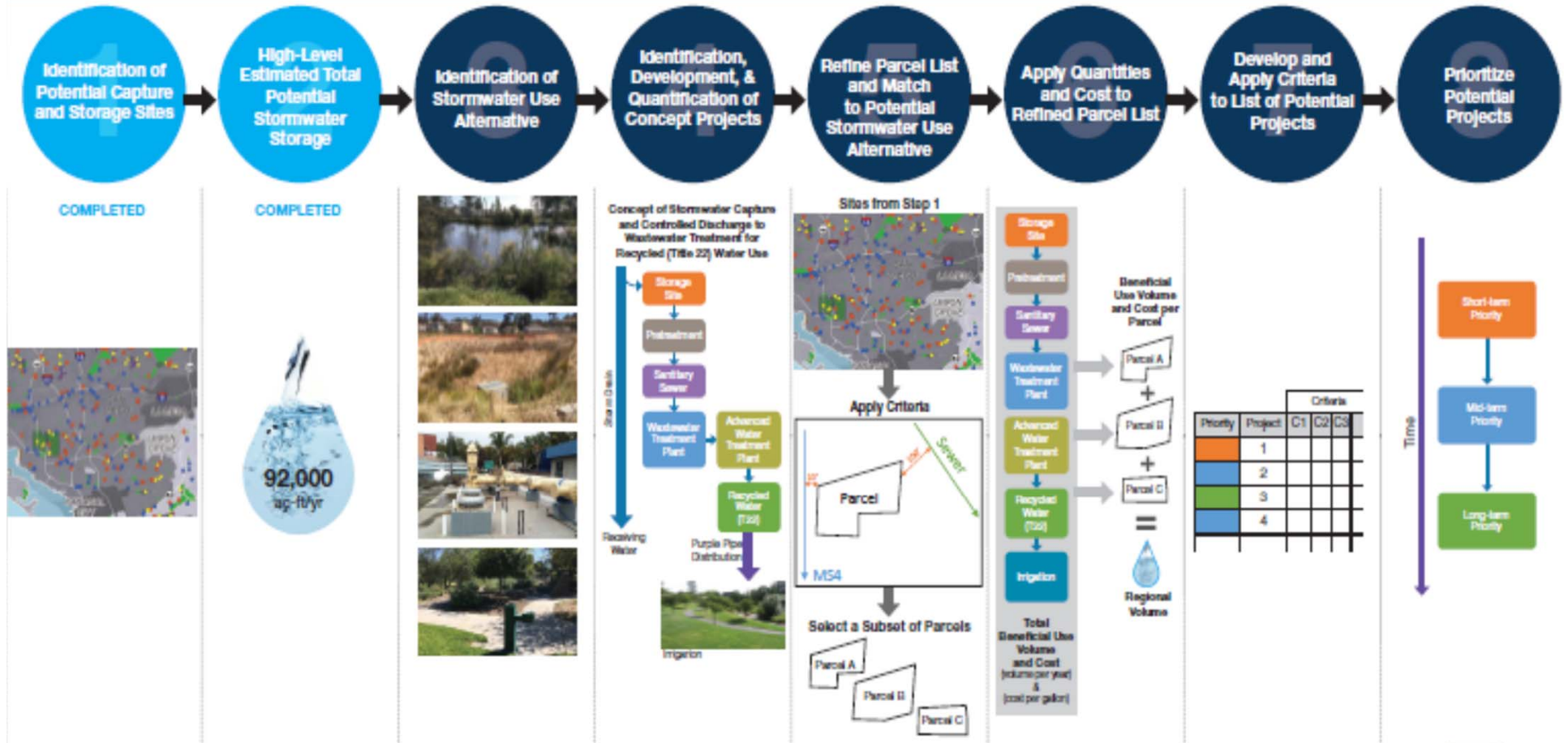
F Controlled discharge to waste water treatment plants:
Solids management during low flows

G Indirect potable use

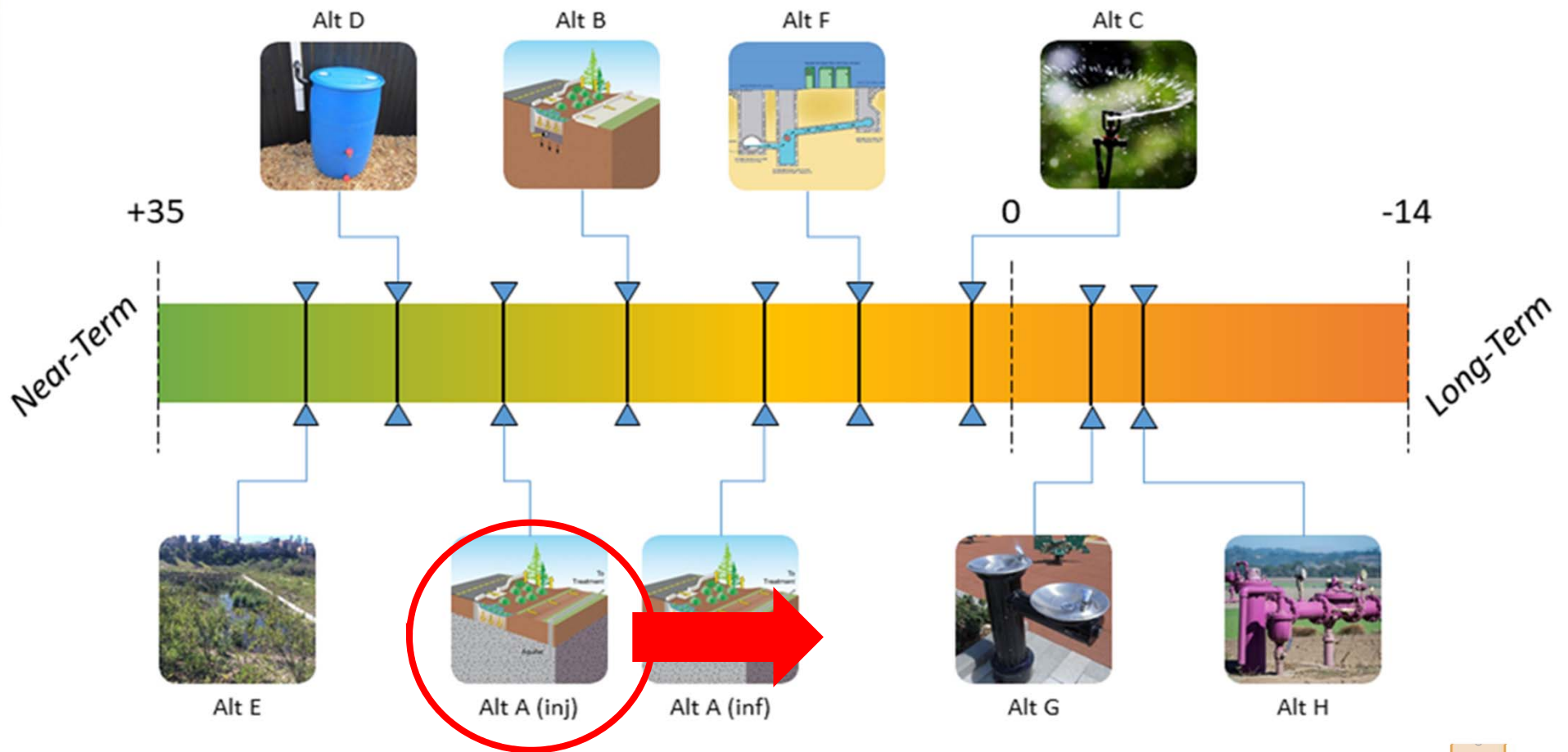
H Recycled water use



Feasibility Analysis Process



TAC Input – Revised Scores

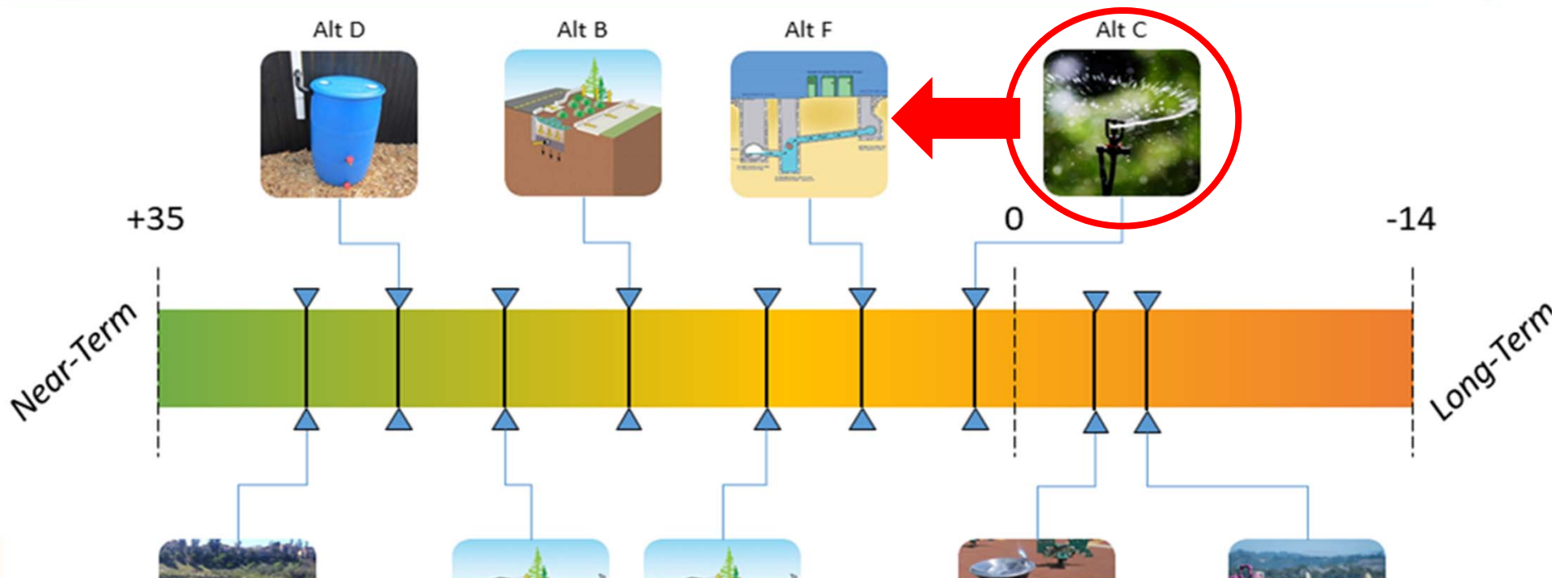


Purpose: SWCFS Actions in 2019 Plan

SWCFS
Analysis &
Results

2019 IRWM
Plan Actions

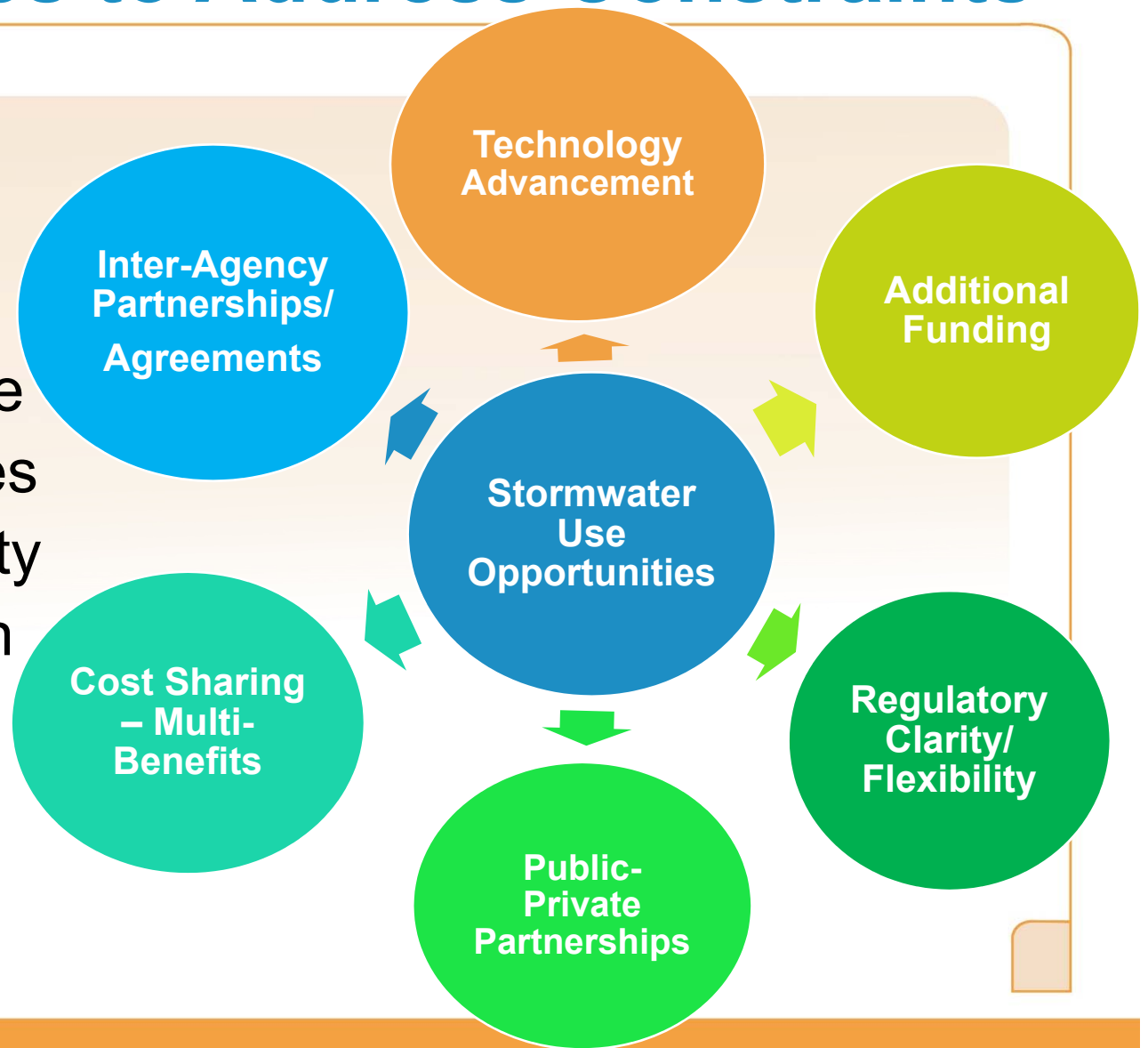
Funding



Opportunities to Address Constraints

Specific Actions:

How to Move
Stormwater Capture
and Use Alternatives
to Greater Feasibility
and Implementation



Opportunities to Address Constraints

Key Questions to Consider:

- What can we focus on to move higher priority alternatives forward?
- Where can we focus resources to open gates that will advance more constrained alternatives up in timeline?

Next Steps

- Draft Feasibility Study: Early September 2018
- Final TAC Meeting #5: September 2018
 - *Presentation of Feasibility Study (Final Report)*
 - *Identification of Actions for 2019 IRWM Plan*

Thank you!



Stephanie Gaines
Watershed Protection Program
stephanie.gaines@sdcounty.ca.gov
858-694-3493



David Pohl
DPohl@esassoc.com
760-497-3318